

# DEDHAM PARISH MAGAZINE



DECEMBER 2023 & JANUARY 2024



# Dedham Parish Magazine

First Published in 1876

December 2023/January 2024

## DEDHAM PARISH CHURCH

Rural Missioners Phillip Young  
 Tel: 323 919  
 John Saxon  
 Tel: 01255 781859

Assistant Minister Merv McKinney  
 Tel: 322 136

## PARISHES OFFICE

Parishes Administrator Deb Turner  
 Tel: 322 136

Email: [stmaryda@gmail.com](mailto:stmaryda@gmail.com)

Assembly Rooms, High Street, Dedham.  
 CO7 6HJ

Tuesday 10am-12pm  
 Thursday 10am-12pm

## CHURCH WARDENS

Vee Druitt Tel: 322 000  
 Peter Wilson Tel: 323 179

## MUSIC

Director of Music Antony Watson  
 Tel: 322 425

**ASSEMBLY ROOMS** Tel: 323 921

## CHURCH FLOWERS

Co-ordinator Helen Sims  
 Tel: 321 286

Wedding Flowers Wendy Sarton  
 Tel: 323 027

## DEDHAM PARISH MAGAZINE

**The deadline for magazine entries is the 10th of the month**

Editor: John Goldsbrough  
 Email: [dedhameditor@gmail.com](mailto:dedhameditor@gmail.com)

Advertising Sara Marshall  
 Email: [dedham.advertising@gmail.com](mailto:dedham.advertising@gmail.com)

## MAGAZINE CONTENT

2. Contacts/contents.
  - 3-5. Services & Church events.
  6. Rural Missioner - John Saxon.
  - 7-9. Church News & Events.
  10. The Nativity.
  11. A Christmas Message.
  12. A poem for Christmas.
  13. Shangs Story.
  - 14-15. Marjorie Culham & Guide Dogs.
  - 16-17. The Journey of a Guide Dog.
  - 18-21. Dedham Parish Council.
  - 22-23. Gardening Notes.
  24. Ardleigh Surgery
  - 25-26. News and Events.
  27. Kingsleigh.
  - 28-48. Advertising.
- Cover Photo - John Goldsbrough

Church website - [www.dedham-and-ardleigh-parishes.org.uk](http://www.dedham-and-ardleigh-parishes.org.uk)

### Can we help?

Sometimes things in life can just get too much to cope with on your own... **Psalm 34:18:** *The Lord is close to the broken-hearted and saves those who are crushed in spirit.* If you would like some support or know of any one who would, please contact: Ruth Higginson **Tel: 322 598.**

**If you would like a lift to church contact Sharon Sarson Tel: 07876114418**

If you have been bereaved or know of anyone who has, please contact Vee Druitt **Tel: 322 000** or Ruth Higginson **Tel: 322 598**

**If you need any further support, please contact the Parishes Office Tel: 322 136 and your call will be returned.**

**Sunday, 3<sup>rd</sup> December**

8.00am Eucharist (BCP) Ardleigh  
 9.30am Café Church Ardleigh  
 9.30am Rise N Shine Dedham\*  
 5.00pm Evensong Dedham\*

**Sunday, 10<sup>th</sup> December**

9.30am Morning Prayer Ardleigh  
 11.00am Holy Communion Dedham\*

**Sunday, 17<sup>th</sup> December**

9.30am Holy Communion Ardleigh  
 9.30am Morning Praise Dedham\*  
 4.00pm Carol Service Ardleigh  
 6.00pm Carol Service Dedham\*

**Sunday, 24<sup>th</sup> December**

9.30am Morning Prayer Ardleigh  
 9.30am Holy Communion Dedham\*  
 4.00pm Crib Service Dedham\*  
 11.00pm Midnight Communion Dedham\*

**Monday, 25<sup>th</sup> December**

8.00am Eucharist (BCP) Ardleigh  
 10.00am All Age Communion Dedham\*

**Sunday, 31<sup>st</sup> December**

11.00am Joint Service Holy Communion Dedham\*

\* = Services which are live streamed.

**Morning Prayer - Every Tuesday (apart from Tuesday 26<sup>th</sup> December) 10.30am at Dedham Church.**

**Online Prayer - Monday Morning at 7am and Friday Evening at 6pm**

**Benefice prayer meeting on Zoom each Monday at 5pm. Please contact the Parish Office for further information.**

**Living Stones Prayer Group:** every 2<sup>nd</sup> and 4<sup>th</sup> Monday of the month: 6.25pm Ardleigh Church

**Ardleigh Friendship Group:** every 2<sup>nd</sup> and 4<sup>th</sup> Tuesday of the month: 10am to 12 noon in Ardleigh Church - outside when weather allows.

**Little Steps Pre-School Group:** every 2<sup>nd</sup> and 4<sup>th</sup> Wednesday of the month: 1.30-3.00pm in Ardleigh Church.

**Men's Breakfast - Saturday 2<sup>nd</sup> December, 9am - venue tbc.** For bacon butties, tea, coffee and chat.

**Monday Lunch Club – Monday 4<sup>th</sup> December, 12.30pm, Essex Tea Rooms.** Phone 322192 to reserve a place indicating it is for the Lunch Club.

**Walk and Talk - Thursday 14<sup>th</sup> December, 10am - Meet at Dedham Arts Centre at 10am for a walk or 11am for a chat**

**FROM THE REGISTERS.**

Weddings:  
 14<sup>th</sup> October - Mollie Venus and Andrew Thurston  
 20<sup>th</sup> October - Nicole Mendes and Thomas Vickers

Interment of Ashes:  
 20<sup>th</sup> October - Margaret and William Thompson,



## Christmas Services at Dedham and Ardleigh Churches

### Sunday 17<sup>th</sup> December

4pm	Carol Service	Ardleigh Church
6pm	Carol Service	Dedham Church

### Sunday 24<sup>th</sup> December

4pm	Crib Service	Dedham Church
11pm	Midnight Communion	Dedham Church

### Monday 25<sup>th</sup> December

8am	Eucharist (BCP)	Ardleigh Church
10am	All-age Communion	Dedham Church

# Services and Events - January

## Sunday, 7<sup>th</sup> January

8.00am Eucharist (BCP)

9.30am Café Church

9.30am Rise N Shine

5.00pm Evensong

Ardleigh

Ardleigh

Dedham\*

Dedham\*

coffee and chat.

## Monday Lunch Club – Monday 8<sup>th</sup>

January, 12.30pm, Essex Tea Rooms

Phone 322192 to reserve a place.

## Sunday, 14<sup>th</sup> January

9.30am Morning Prayer

11.00am Holy Communion

Ardleigh

Dedham\*

## Walk and Talk - Thursday 11<sup>th</sup> January,

10am - Meet at Dedham Arts Centre at

## Sunday, 21<sup>st</sup> January

9.30am Holy Communion


9.30am Matins

5.00pm ReVive@5

Ardleigh

Dedham\*

Dedham\*



**Junior Church**  
Bible, games and fun!

Junior Church is our children's group for 3-10 year olds during the usual Sunday service in Dedham.

With games, crafts, Bible stories and snacks, we always have lots of fun!

Please contact Louise Young  
youngle@cantab.net for further details.

All are welcome!

## Sunday, 28<sup>th</sup> January

9.30am Morning Prayer

9.30am Holy Communion

Ardleigh

Dedham\*

\* = Services which are live streamed.

## Morning Prayer - Every Tuesday,

10.30am at Dedham Church - starting again on 9th January

## Online Prayer - Monday Morning at

7am and Friday Evening at 6pm

## Living Stones Prayer Group: every

2nd and 4th Monday of the month:

6.25pm Ardleigh Church

## Ardleigh Friendship and Craft

**Group** – every 2nd and 4th Tuesday of the month: 10am to 12 noon in Ardleigh Church - outside when weather allows.

## Little Steps Pre-School Group –

every 2<sup>nd</sup> and 4<sup>th</sup> Wednesday of the month: 1.30-3.30pm in Ardleigh Church.

## Men's Breakfast – Saturday 6<sup>th</sup> January,

9am. Venue tba. For bacon butties, tea,



Follow us on Facebook, search -  
DedhamandArdleigh



Our services are on YouTube - search  
Dedham and Ardleigh  
Parishes.



Scan this QR code to access  
the Dedham and Ardleigh  
5 parishes website

Dear Friends,

Let me introduce myself. I am John Saxon, Harwich Deanery Rural Missioner and I am pleased to be called to a new ministry post to be with you to witness to God's love to all in our village communities. Thank you for the welcome my wife Dawn and I have received since moving into the Rectory at Great Oakley earlier in the Autumn. We haven't quite yet made it to every church in the group of nine parishes seeking to work together here, but hope to do so soon.

Dawn and I met at a Colchester church and we spent over 30 years in the town (now city!) raising our family there. Now all grown up, we have three daughters and a son and two grandchildren. I was a Paramedic for 15 years and covered many calls across the Tendring peninsula in that time. When our family were still young I gave up shift work to train as a primary school teacher. I later moved to work in a special school for many years before retraining again to be ordained Priest in the Church of England in 2018.

My first ministry post was in Saffron Walden with the group of villages surrounding the town seeking to work together more closely in ministry. Dawn worked in a bank before leaving to become a full-time mum. Returning to work when our children were older, Dawn has had various roles in administration, not least two long term positions as 'Parish Administrator' in the churches we have belonged to.

I should mention the last member of our family, Nahla our 7 year old Cairn Terrier. Dawn and I love taking her for a walk together and are pleased to be near Frinton beach again to enjoy walks there, remembering many happy summer days with our family when younger. Other interests include reading, music and football for Dawn and vegetable

gardening and cooking for John.

In recent years we are enjoying holidays exploring the many places of the British Isles we haven't been to before. Meeting new people and sharing a little of my varied career path, people remark about the challenges of starting over in a new career. Yes, it does present new challenges, and Dawn may well have more to say about that than me, looking after a young family while I was re-training! However, we think it is more about doing the right thing rather than the same old thing. 'If you do what you have always done, you will get what you always got' I was once told. When faced with change I am always encouraged by a popular Old Testament verse, Isaiah 43 v19 'I am about to do a new thing, [says the Lord] now it springs forth do you not perceive it? I will make a way in the wilderness; rivers in the desert.'

Change is always a challenge, but it does lead to new opportunities and rewards. As Dawn and I settle to our new lives and ministry here among you, we look forward to all that God will lead us into; new ways of working and supporting each other; new ventures in the lives of our village churches and communities and, we pray, new disciples joining with us as we journey together in the Christian faith.

We hope you can join us as we celebrate the birth of our Saviour this Christmas – see details of our Christmas Services. Do invite your family and friends too. Why not find out more about the Christian faith in the New Year through Alpha – a course exploring questions of faith in a welcoming and non-threatening way. Look out for more posters in the New Year or contact me for preliminary details now.

*Best wishes, Revd John Saxon  
Rural Missioner*

Tel: 07484 332734 01255 781859,

## Dedham Lecturer

You may remember an article in this magazine a few months ago about the Dedham Ecclesiastical Lectureship Trust, founded in 1577 to ensure that the Bible would be taught to the people of Dedham through high-quality sermons based on scripture. Under the terms of this Trust, the trustees' duty to appoint a Lecturer of Dedham recently revived, and the trustees are delighted to have appointed Richard Hopkins to the role.

Many of you will have heard sermons or addresses given by Richard in church or school settings and will know what a versatile and talented preacher he is. As Lecturer, he will be putting that talent to good use in delivering sermons at many of the regular church services in Dedham. The trustees are most grateful to Richard for his commitment to the original aim of the Trust: the aim of bringing the word of God to people in Dedham through excellent sermons. In this Richard will be working in collaboration with the PCC and our Rural Missioner Phillip.

*Clifford Sims, Chair of Trustees.*



Supporting Church music in the Tendring area

### **December 3<sup>rd</sup>**

The Deanery Choir will be supporting the Patronal service, with an Advent theme, at 3pm at: St Nicholas Church, 67, Church Street, Harwich. CO12 3DR. The anthem that they will be singing will be 'A spotless rose' by Herbert Howells, a haunting melody that repeats throughout the anthem.

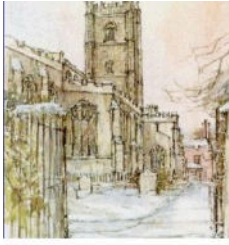
### **December 10<sup>th</sup>**

The Deanery choir will be singing at St Georges Church, Great Bromley CO7 7HZ at the 10.30am communion service. The anthem that they will be singing is 'Bethlehem Down' by Peter Warlock.

### **December 16<sup>th</sup>**

The Deanery Choir will be performing 'A living Christmas '23' at St Mary Magdalen Church, Clacton Road, Thorrington. CO7 8HA at 7pm. A concert of music by contemporary composers and arrangers, who are still alive, interspersed with readings reflecting the Christmas message. The talented Peter Clayton is our organist.

*Graham Bell, Deanery Choir*



CHILDREN  
AND YOUNG  
PEOPLE'S  
WORKER

DEDHAM  
PARISH  
CHURCH



### Do you have a heart for young people and children and a desire to see them follow Jesus and grow in faith?

We are seeking a servant-hearted individual to develop our ministry with young people and children and their families in Dedham and the surrounding area. Main responsibilities are the discipleship of young people and children in the church, support of their families, outreach to young families in the community and leading a growing team of volunteers.

32 hours/week at £12.02/hour (1-year contract, with a view to permanent)

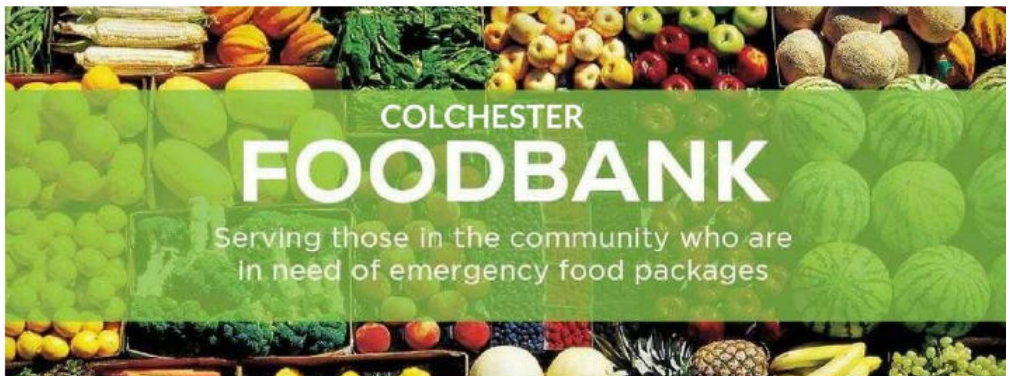
Closing date: **Friday, 26 January** (Interviews early February)

Scan the QR code for a job description and application form.

For an informal conversation contact Revd. Phillip Young on [HarwichRMPPhillip@GMail.com](mailto:HarwichRMPPhillip@GMail.com)



An Occupational Requirement exists for the post-holder to be a practising Christian. The post is subject to an Enhanced DBS check.







# THE JESSE TREE

A FAMILY ADVENT ADVENTURE THROUGH THE BIBLE

Jesse Trees are an Advent tradition which began in medieval times. Each day of Advent we read a short thought from the Bible, telling the story from Creation to the birth of Jesus. Each day is accompanied by a special decoration or ornament, which symbolises the story for that day.



Why not join us and make your own Jesse Tree this year?

We have put together a booklet which contains everything you need to create your own Jesse Tree. Either pick up a hard-copy from St Mary's Church, or scan the QR code opposite, which will take you to an online version. The booklet contains daily thoughts to take you from 1 December to Christmas Day, as well as printable ornaments for you to cut out, colour, and hang on your Jesse Tree.

You can follow along (and share your own creations) on the [Dedham\\_and\\_Ardleigh\\_parishes](#) Instagram account, or using the hashtag [#HRMJesseTree](#)





Artwork by Florence - year 2, Dedham Primary School.  
Our thanks go to Kingsleigh Property Consultants for donating the winner's prize.



Christmas is exciting. All of it. From starting to hear the Christmas music playing to running downstairs on Christmas Day morning to see if there are presents under the tree!

At school we learn songs and carols and then just before Christmas we go to Church and sing those songs for our families. I like seeing all our friends there and when you sing those songs it feels magical and special.

Christmas means spending time with our family, playing silly games, enjoying yummy special food – mince pies are my Christmas favourite - exchanging gifts, pulling crackers, receiving and giving Christmas cards.

We like decorating our house with all our favourite decorations we have chosen over the years, these are lovely to remind us of previous memorable Christmas times.

We love going round looking at all the different coloured, jolly Christmas lights, for the whole month of December.

Christmas lights shining brightly are beautiful to look at and remind us of the star that shone for the Shepherds and Wise Men.

On Christmas Eve we go to church as a family, the service feels more magical than any other service during the rest of the year. I like seeing the Church dressed up for Christmas, and when we go home the stars are shining brightly.

We lay our stockings out ready for Father Christmas, with a carrot for Rudolph and a mince pie and a little shot of Whisky for Father Christmas, and go to bed excited for the surprises in the morning.

Christmas is just so magical and exciting and we love everything about it.

*Jack & Emily Haynes*





## Christmas 2023



Christmas this year flings us back nearly 20 centuries,  
When tribal wars were raging throughout our world  
Our God-given creation of the natural world  
The harmony of trees and flowers  
Bird song heralding the dawn, fare-welling the night.  
The beauty of colours in birds mountains, rivers.  
All wars create pyrrhic victory;  
Peace is always power to the victors  
Servitude to the defeated  
Through the darkness a light appears  
First faint then with a brilliance  
To reveal that first evening star  
When God burst into our human world in such a gentle way  
When the saviour of the world was born in Bethlehem  
A helpless babe smiling at Mary  
His young mother  
Nestled 'neath her breast drinking the life-giving milk.  
The journey of the Magi with their dream  
Led them to follow that brilliant evening star  
Hovering over the stable for gentle animals  
Where they brought them kingly gifts  
Of gold, frankincense and myrrh.  
This Jesus, this youngest rabbi astounded his elders  
Encouraged his followers  
Challenging his disciples with love  
To make a better earth  
Today we are challenged in different ways:  
The poor have insufficient food for parents and children,  
Homeless, the lonely, the bereft.  
But our Christmas is celebrating  
The birth of Christ the Saviour of the world  
Praising him with carols and hymns,  
Sharing food with the needy and spreading the good news!  
Glory to God in the Highest  
And peace to his people on earth.

4<sup>th</sup> November 2023

*Geraldine Watson*

*Claire Arculus writes* - At the beginning of November, I was privileged to meet with Shang (Peshang), an Iraqi Kurdish 29 year old man who has been through the most difficult, life threatening challenges we, as British citizens, can only imagine in nightmares.



I first met Shang at the BBQ at Langham Community Centre in July which was referred to in the September issue. Shang worked as a YouTube social media influencer in Iraq before he was forced to leave his home, family and friends following a brutal attack by Government agents (PDK-PUK) in 2021 in his small rural home neighbourhood.

He was no longer safe to stay there. Listening to Shang's story, it became clear to me just how real all the awful experiences we read about and see in the news are. Innocent babies, children, men, women and the elderly subjected to torture, human trafficking, isolation and starvation. It took Shang nearly a year to reach the UK from Iraq, facing all of the above and fearing death at every moment.

Whilst listening to Shang's story it is clear he is a remarkable, passionate and dedicated individual, standing up against the corruption and brutal oppression of his home country. But there are deep wounds and what Shang experienced would do nothing short of leaving any human being with post traumatic stress and complex mental health problems. Shang expressed his happiness when he arrived in the UK, visiting London and a taxi driver asking 'Where to luv?'. The warmth and friendliness in this question, immediately made Shang realise he no longer needed to fear for his life.

Colchester has been Shang's home since September 2022, living in the Holiday Inn on Birchwood road with other asylum seekers. It's taken a while for Shang to trust in people but meeting Martin Green from Community 360 has helped rebuild his trust in others. Martin is the community driver for the asylum seekers and has been supporting Shang and many others to get on their feet and become independent. Shang has also kept as busy as he can (in his words to keep his mind off thinking about what happened to him). Volunteering in the Langham Village shop once a week as well as recording videos for Colchester City Council and filming clips for Tabletennis England.

Very sadly the Holiday Inn is no longer going to accommodate asylum seekers after mid-December. This means all residents will be relocated. Some to the Bibby Stockholm Barge in Dorset. Again, setting fear for many as to where they will end up eventually and if they will be sent back home. Nothing is certain until they receive Refugee visa status.

At the end of meeting Shang, it was hard not to shed a tear. Sadness at what he has had to experience and for so many who have suffered or lost lives as a result of fleeing their country.

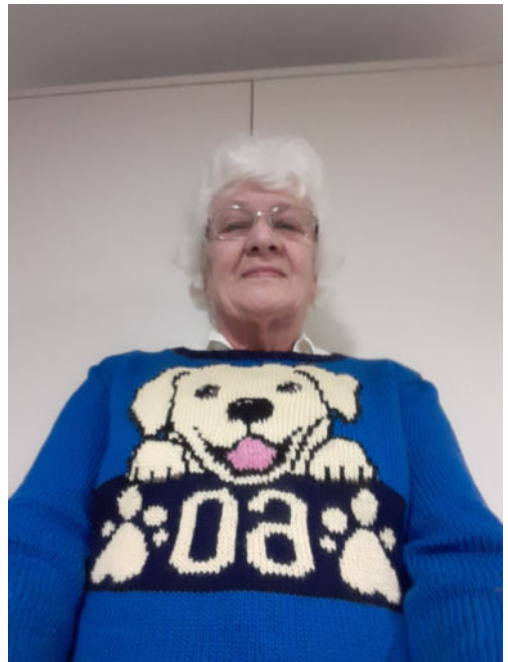
# Marjorie Culham Long Service Award

## Long Service Award 60 years - Marjorie Culham

This year marks an incredible milestone for Marjorie Culham - an impressive 60 years volunteering for Guide Dogs.

Marjorie's involvement with Guide Dogs started when she was a Girl Guide leader in the 1960s collecting foil bottle caps, and later supporting her local fundraising group. When the Redbridge Training School opened 1986 she jumped at the opportunity to puppy raise, which she continues to do to this day and has now raised 31 puppies!

Over 20 years ago, Marjorie set up the Stour Valley fundraising group, which she still runs with the support of her husband, David. Marjorie is a passionate advocate for the rights of people with sight loss and helps educate her local community about the importance of our work. At the beginning of this year, Marjorie was recognised in the New Years Honours List for her voluntary and charitable services to people with a vision impairment.



Recently Marjorie organised and wrote a special service to commemorate her 60 years of service, which was held at St Mary's Dedham where Marjorie was baptised, confirmed and married to David. The Rev Merv McKinney took the service which Marjorie says "was wonderful and meaningful" and the full church was attended by Guide Dog Trainers, 6 impeccably behaved dogs, and two Regional Volunteer Partners!

The service which included uplifting hymns as well as a reading from a lady who explained in prose about the "sadness and pride" of guide dog trainers and was titled "Lament of a puppy walker." Alongside this Lucy Morris with her guide dog Harty, told us how her life had been transformed by her guide dog who has helped her to travel on buses and trains to work, meetings and further educational training - things she never thought she would be able to achieve, she owes to Harty.



## Marjorie Culham Long Service Award



Marjorie was applauded by us all for her wonderful 60 years of service with the Guide Dog Association and presented with the “promise” of a very special jumper (see photos) to commemorate her very continued active involvement training puppies.

When asked Marjorie told us that all her dogs have been special to her and she has recently been told about Carlo her last black Labrador puppy who qualified as a Guide Dog last February.

Since then Marjorie has heard from his owner who received him last March after his previous guide dog died. The gentleman told her that he quickly became housebound without a dog and so was delighted to be given Carlo, saying “ he had got his life back again with Carlo” As Marjorie says “ to think that I helped that pup at the beginning of his journey to be a life changer what more could I ask for !!!”

So thank you Marjorie for sharing your Guide Dog Training experiences with us all in Dedham and to Kenny your most recent puppy.

## The Journey of a Guide Dog

Did you know that there are 2 million people in the UK living with sight loss and this number is set to double by 2050? The Guide Dogs for the Blind Association exists to ensure that people with sight loss can live the life they choose. We do this by providing support services to children and adults with a visual impairment. Of course, we are best known for our life changing guide dogs - in fact, we are the largest breeder and trainer of working dogs in the world. So, allow me to tell you the story of our amazing dogs....

The story starts with breeding. Our guide dog mums and dads live with very special breeding stock volunteers, close to our National Centre near Warwick, so we can provide care and support when needed. Four weeks after mating, a member of the Guide Dogs team will visit the expectant guide dog mum at home to carry out an ultrasound scan to confirm the pregnancy. The ultrasound will also give a good indication of how many pups we should expect.

Normally our puppies are born in a volunteer's home, with the support of a specially trained staff member. Guide dog mums tend to manage very well by themselves with the right peaceful surroundings. However, some mums need to have their puppies at the National Centre, where a dedicated member of the team will be ready to greet the expectant mum and will be with her every step of the way. As soon as our pups are born, they will be expertly cared for by our breeding stock volunteers and staff. Pups will be monitored closely to make sure that they are all gaining weight, and we keep a close eye on mum too. The puppies develop and grow, learning to play and socialise with their siblings, and when they are roughly 7 weeks old, they move to our National Centre. Here, the puppies get to explore new surroundings

and enjoy making use of the specially-designed indoor and outdoor play areas, snuggling up together in their cosy beds for some well-earned rest. Volunteer puppy socialisers play, cuddle and spend time with our puppies, whilst our team of highly trained staff provide around the clock care. After a day or so of exploring their new surroundings, each puppy is microchipped and receives their first vaccination. A volunteer Puppy Raiser is then carefully selected, who will soon welcome the puppy into their loving home.

Volunteer Puppy Raisers look after our puppies from roughly 8 weeks of age until they are just over a year old. Puppy Raisers have a really important role in the pups' development; teaching them good social behaviour and familiarising the puppy with all the sights and sounds of everyday life, including town centres and public transport. It's an exciting time for both puppy and Puppy Raiser when they meet for the very first time. There are lots of smiles, licks and cuddles as the pup progresses on its incredible journey. We currently have opportunities across the Southeast to become a volunteer Puppy Raiser. It is a very sociable role - you are supported by a dedicated member of staff in your area called a Puppy Development Advisor and will be introduced to a network of other volunteer Puppy Raisers within your local community. We provide full training and out of pocket expenses. Once our dogs are ready, they will leave their Puppy Raisers to move onto the next stage of their journey. Whilst the Puppy Raiser is always sad to see them move on, the overwhelming feeling is of pride - knowing that they've played a huge part in preparing them with the skills and life experience they'll need for the next part of their journey. This can take several forms, with some going on to become guide dog mums and dads of the future,



## The Journey of a Guide Dog

others become Buddy Dogs- Buddy dogs don't quite have the right skills to guide but instead we will place them into the home of a child with sight loss, where they will become a fantastic canine friend for that child, helping them to build confidence in themselves and trust their surroundings.

Last year, we partnered 52 children with a buddy dog in the UK. Whatever path or dogs take, they have a hugely positive impact. But of course, the hope is that they will move into formal training to become a guide dog. Progressing to training is an exciting time for the young dog. This dog adapts quickly as they are paired with a Guide Dog trainer who will support and guide them throughout the next stage of their learning.

They'll have new four-legged training buddies to meet, greet and play with. We have 5 sites in the Southeast of England where our dogs might undertake training. These are Redbridge, St Albans, Reading, Maidstone and Central London. Whilst in training our dogs live with a volunteer foster family, who will care for them in the evenings and at weekends – providing a loving home whilst they learn their new role with their trainer during the day. Still eager to learn, this young dog can now take part in more advanced training, building on the skills they learned during their puppy days.

Through the expert guidance of our talented trainers, a real transformation now begins. You wouldn't think it possible to teach a young dog some of the things they now master, such as how to avoid low hanging obstacles. These will be incredibly vital when the safety of their owner is in their paws! Having practised wearing their puppy jacket, it doesn't take long for them to get used to their training harness. The harness and handle are so important as it's through the handle that you feel the movement of the dog and follow it. Without it, guiding isn't

possible.

Our dogs have a daily routine combining learning, playing and relaxing to ensure all their needs are fully met. A happy and well rested dog is important to us, and it helps them learn more quickly too.

Once we are confident that a dog is ready, they will move onto the final stage of their training, working with a Guide Dog Mobility Specialist. At this point, the staff member will review the dogs' skills and qualities and seek to find the right match with a potential guide dog owner.

The process to match our dogs with their future owners is very detailed, ensuring that temperament, workload, and area is all taken into account. Once this has all been done, the future Guide Dog owner will meet their dog and then start training together, getting used to each other's pace, tells, rhythm and way of life, before they officially become a partnership.

Not all of our dogs will qualify to become guides- We make sure that the next step the dog is about to take is right for them- their welfare is always at the heart of everything we do. For those who don't progress, they may go into an alternative career, perhaps as a buddy dog, as we mentioned earlier. If not, they will be rehomed as a pet dog, either by one of the amazing volunteers who has helped them on their journey or by a member of the public. There is no shortage of people keen to rehome our wonderful, well-trained dogs once they are withdrawn or retired from the Guide Dogs service. For those who do go on to qualify- Our guide dogs give people with sight loss the confidence to get out and about safely, forming a life-changing partnership – providing freedom and independence for years to come.

*Lisa Cooke*

[volunteersoutheast@guidedogs.org.uk](mailto:volunteersoutheast@guidedogs.org.uk)



Dedham Parish Council has agreed that a regular update of decisions made at its latest meeting should be shared via the magazine. As a new

Council member I have agreed to be responsible for the village being kept informed of recent decisions.

## **DPC Meeting 6<sup>th</sup> November 2023.**

A successful litter pick took place in October and it is planned to organise this on a regular basis in the spring. It was agreed to replace the waste bin in the High Street by Princel Lane with a compactor bin. Cllr Mole was elected as Vice Chair of the Council.

### **Planning applications.**

There was concern expressed at a planned proposal for alterations at Petal Lodge and it was agreed to oppose all planned developments.

### **Traffic and speeding.**

It was reported there is a regular police traffic team around the village. It was agreed that consideration needs to be given to pedestrian signs in areas around the village where there are no pavements.

Because of the lack of progress with Essex Highways on addressing the problem of speeding through the village, it was agreed in principle to help residents by having 20mph green stickers through the centre of the village and 30mph red signs elsewhere. It was also agreed to investigate replacing signs that have fallen down. Also it was agreed to consult with the school about running and possibly developing their annual traffic campaign competition.

### **Double yellow lines.**

There was discussion about visibility of the lines outside the Coop. A zebra crossing in Mill Lane is to be discussed further at next meeting.

### **Royal Square.**

The surveys have been distributed via the Parish Magazine and there will be a public exhibition of the various plans available for residents to see in the Duchy Barn on the afternoon of Monday 4<sup>th</sup> December from 2pm prior to the Parish Council meeting.

### **River update.**

The meadows by the river have been flooded and this raised the need for reviewing the flood alert plan as part of emergency plans. It was noted the Environment Agency had alerts in place.

### **Sustainability update.**

There are plans to produce a booklet and poster for residents on carbon reduction actions that everyone can make.

### **Social Media.**

A strategy for social media was introduced, including a dedicated Facebook page for the Parish Council which could include urgent alerts in between publication of the monthly parish magazine.

### **Proposed Committee restructuring.**

The following sub groups were agreed - Finance, Standards and Procedure, Infrastructure and Assets Management, Community Relations, Planning, Traffic and Personnel.

### **Christmas Market and Christmas wreaths.**

It was agreed to give a grant to the organisers of the Christmas Market in the High Street on December 2<sup>nd</sup>. Christmas Wreaths will be given to all businesses in the village.

*Douglas Bourn*

## Traffic issues update.

It has been some time since we have been able to update you on this subject. That is because Essex Highways have taken over six months to reply to DPC's last communication. As you can see from their communication below and DPC's response in blue italics they refuse to accept that Dedham has an issue with speeding vehicles. This is strange because Speed Watch have reported a 50% increase in speeding vehicles to Essex Police over the last year. Essex Highways have also avoided the request for a site visit that DPC submitted over a year ago.

There is some good news in that four Trucam sites have been approved in the village - whereby anti-social drivers will receive a direct fine (rather than a letter) from the police. Many thanks to our indefatigable Speed Watch team who have pushed hard for this. Thanks also to Roger Hirst the Police, Fire and Crime Commissioner who, following the "fish and chip supper", agreed to take up our case. Sir Bernard Jenkin has also taken an interest as we are by no means unique in Essex.

Dedham now has an active sustainability group and most are aware that reducing speeds not only reduces toxic emissions and particulates from tyres, but also a speed reduction in the village centre from 30 to 20 would reduce noise levels by 50%. Contact [douglas.bourn@dedhamparishcouncil.co.uk](mailto:douglas.bourn@dedhamparishcouncil.co.uk) if you are interested in getting involved.

However, we do appear to have hit a brick wall in using the "proper" channels. DPC is not ready to give up and believes that there is much that can be done at a grassroots level to help ourselves. We will provide more information on this in the near future.

Once again thanks to our Speed Watch team, please give them your

support and if you have just a few hours a month to spare give Steve Redmond a call 07879 690485 and he will be more than happy to explain what is involved. Tragically somebody died on the Dedham Road, Ardleigh on the 7th October, let us hope the same fate does not await one of our residents on our beautiful rural lanes

## Responses from Essex Highways and Dedham Parish Council comments.

**ECC** - Speed Management Strategy, this document does state that the strategy in villages is to move toward 30mph limits. A Speed limit of 30mph would be the default in urban areas and villages. Essex County Council has relaxed the Department for Transport definition of a village (under Traffic Advisory Leaflet TAL01/04) being 20 or more houses over a minimum length of 600metres. The ECC requirements are for 11 or more properties to include houses, shops, churches or schools or public houses (traffic generators) over a minimum length of 350 metres.

*DPC - Once again Essex Highways has ignored the traffic generated by the 2000+ houses that have and are being built in Mistley and Lawford alone. Many of these use Dedham (and Ardleigh) as a cut through to the A12 North and Southbound. These are a far more significant generator of traffic than churches (declining attendance) and shops (online shopping). We have a growing Primary School that is expanding rapidly and a significant proportion of parents who use the very roads we are referring to, access that school. This is totally illogical.*

**ECC**- Dedham is a 'Parish' which contains a Village and the Village already has a posted speed limit of 30mph. We believe it would be hard to make a case that the whole of Dedham Parish is 'Urban' i.e 'built-up' – so unfortunately it does not satisfy the requirements of a blanket 30mph which is what the report says and what the Design Team were asked to look at.

**DPC** - *Dedham is in fact made up of a series of hamlets (The Heath, Lamb Corner, Bargate Lane, Long Rd and Ardleigh Rd) all residents deserve to have a 30mph limit. The point here is consistency. e.g. Long Road West and Long Road East are almost identical in residential make up and is used by exactly the same traffic. The only difference is that LRE has the old Methodist Chapel which generates virtually no traffic at all, but one has a 30 mph limit the other 40. This is illogical, confusing for drivers and makes it difficult for law enforcement and Speed Watch to enforce*

**ECC** - Accident data for the report covered the period 01-01-2019 to 31-07-2022. Data from the Road Safety Team that is accurate up to 02-03-2023, shows that there have been two injury accidents in that time. The first was an addition of 19-07-2022 where a vehicle left the road because of an animal or object being in the carriageway. The second was on 08-02-2023 where the driver of a vehicle failed to give way at the junction on Dedham Heath. There are no other records, we do not have any records on the High Street for the accidents where the Parish have observed that the Police were in attendance. With regards to the Parish comments on the accident statistics & criteria, we understand these points have already been answered directly by the Road Safety Engineering team.

**DPC** - *We are all aware of far more accidents than reported on the map. Three alone at the bottom of Grove Hill in the last year. Also they seem to have missed off the fatality on the B1029 in Ardleigh. A road that consistently appears in the top 3 speeding sites in Essex.*

**ECC** - 20mph Zone/Order. The PC have referred to the Speed Management Strategy Document, but others that require referencing are HPN 040, which clearly states that 20mph speed limits may only be considered for the PR2 routes where the existing mean average speed is 24mph or under, following approval by the Cabinet Member on a CMA. The speed survey data gave mean average speed returns for Mill Lane, High Street & Brook Street of 24.9mph, 26.7mph & 30.0mph respectively. Therefore, unfortunately the required criteria is not met. The report also correctly states 20mph Zones are not permitted on PR2 routes.

**DPC** - *Very difficult for residents to accept this when 20mph limits in villages are observed in neighbouring counties. Why is Essex different?*

**ECC** - The current Highway Code is talked of more than once within the Parish comments. Reading the Code, it does not give any detail for changing highway infrastructure, it informs different road users on how they should behave on the highway.

**DPC** - *How very strange that principles that come from Central Government are not supported by a governmental body (Essex Highways). Not to mention ECCs own Vision Zero. Totally illogical.*

**ECC** - The report produced recommendations based upon impartial evidence-based information (7-day speed and volume surveys, recorded accident data) and assessed that against relevant codes. Within that framework, the Design Team can only make recommendations when there is evidence-based information that there are issues where some intervention can be justified.

*DPC - We would question the reliability of the source of evidence. ATCs are easily visible on a long clear stretch of road so most drivers automatically slow down. Even so the data collected shows a significant number of vehicles travelling way above the speed limit, and this justifies a reduction in speed limit.*

*Gill Neville*

## Public Consultation for the redevelopment of Royal Square.

Dedham Parish Council are carrying out a public consultation which concludes on 31<sup>st</sup> December. We would like to gain the opinion of residents and businesses about a number of outline proposals to upgrade the Royal Square.

The consultation proposal were circulated with copies of the November Parish magazine. If you haven't had one then copies are available from the back of the church, or you can download one from Dedham Parish Council website, <https://www.dedhamparishcouncil.co.uk/parish-council/royal-square-proposals/>

or scan this QR code.



An exhibition of the three options will be held in the Duchy Barn, on Monday 4<sup>th</sup> December 2pm to 6.30pm when residents will be able to discuss the plans with councillors if necessary.

## The next meeting of Dedham Parish Council.

This will take place on Monday 4<sup>th</sup> December at 6:30pm in the Duchy Barn.

The Agenda for the Parish Council meeting always includes an open session - Have Your Say and visitors reports (CCC and County Councillors). The agenda and the minutes of the previous meeting can be viewed on the homepage of the Parish Council website.

([www.dedhamparishcouncil.co.uk](http://www.dedhamparishcouncil.co.uk))



## COFFEE WITH COPS

Gary Woolford 42072690, a PCSO based in Colchester, will be holding a one hour Coffee with Cops session by the War Memorial in Dedham. The next session will be on Monday 11<sup>th</sup> December 10:00am.

## Happy Christmas everybody

I'm sure you're looking forward to the festivities, but before you settle in for turkey or goose (maybe turducken), I know you'll want to get some gardening done to offset the calories.

First on your list should be some winter pruning to encourage productive fruit trees and keep shrubs to a manageable size. Trees and shrubs are dormant now so there's less chance that some will bleed sap, and leaves have fallen which means it's easier to see what you're doing.

I'll tackle the wisteria over my shed but leave some of the whippy shoots to train over a nearby arch. I've a couple of grapevines – one of the plants that traditionally bleed if not fully or close to dormant – to prune too.

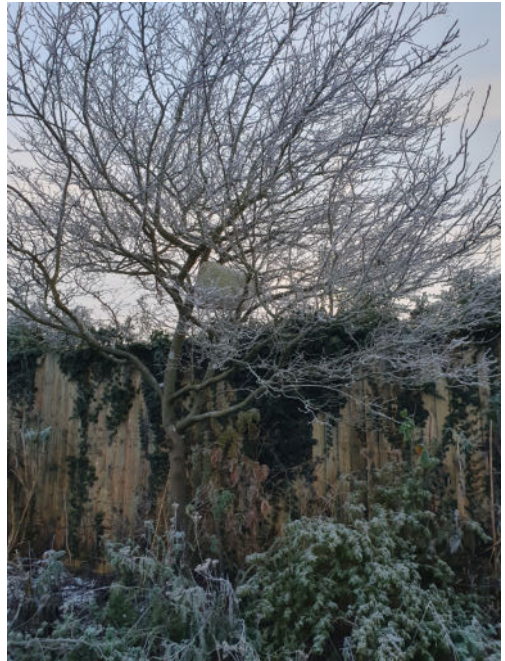


Wisteria

Grapevines can produce growth of up to 10ft in one season, so need to be kept in check by pruning sideshoots to two buds from the main stems that are kept as a framework. You can also take a blunt knife and scrape all the loose bark from the main stems and around the spurs, to root out pests and let new growth come through more easily. Though that seems like a lot of extra work.

Wisteria can also be taken back to 2 or 3 buds after the haircut I gave it in the summer. This will keep the plant tidy and the size you want but is essential to get the best from its flowers. The one in my garden gives me two flushes, early and later in summer.

It's the perfect time to take saw, loppers and secateurs to the pear and apple trees at the back of the garden. I want an open, balanced structure that lets air through the branches. Apparently, you want to be able to chuck a hat – possibly a pigeon (?) – through the middle of it.



Start with the 'three Ds' – removing all dead, diseased or damaged wood, as well as crossing branches which can rub. Take your time, stepping back now and then to look at the shape of the tree, ideally from all sides, until you're happy with size and structure.

Then cut back this year's growth on main branches by up to a third to a bud facing the direction you want it to grow

in. Cut back side-shoots to five or six buds.

Through Christmas and the new year, I'll check the state of dahlia tubers lifted to store over winter to ensure none of them are rotting. Many were grown from seed last spring, and they probably aren't big enough to make it through winter if left in the ground. I forked them up carefully, used the jet of the hose to get as much soil off as possible, and then let them dry before wrapping them in newspaper and putting them in the frost-free garage. I'll cut off individual tubers



Dahlias

that are showing signs of disease or rot and dust the cuts with flowers of sulphur.

In January, I'm going to start the process of taking cuttings which apparently are a better approach when exhibiting and give bigger flowers. I'll take them out of the garage, pot them up, give them a drink and some bottom heat and – when the shoots reach 3-4 inches – will start taking cuttings to grow on for our Autumn Show.

It's possible to do the same thing with chrysanthemums if they're not doing well enough on their own – to the extent that they're taking over your allotment. Look out for some pink 'mums' in our May plant sale.

After our sell-out Christmas Curry and Quiz on 6 December, we'll take a short break in our events programme

before hosting a 'virtual talk' on Zoom on Wednesday 7th February.

The former editor of BBC Gardener's World magazine, Adam Pasco, will talk to us about 'easy ways to keep gardening'.

Keep up to date on our website.

*Elliott Frisby*

Scan this QR code to access our website, [www.dedhamgardening.wordpress.com](http://www.dedhamgardening.wordpress.com)



### Dunton's Almshouses Charity

A vacancy has arisen in one of the above almshouses in Crown Street, Dedham, for which applications are invited.

Applicants must be over 60 years of age, in housing need and live in Dedham or nearby or have close links/association with the village. For this property ability to manage stairs is essential.

Further information and application forms from the Clerk to the Trustees, c/o Homestead, Coopers Lane Dedham CO7 6AX, email [codybig7@gmail.com](mailto:codybig7@gmail.com), Tel: 01206 322565.

It is anticipated that the almshouse will be ready for occupation in early March 2024.

Season's greetings to all our patients, friends and advocates of Ardleigh surgery.

## News from the surgery

We have a clinical pharmacist; his name is Joseph Davies. Joseph will have patient consultations on Tuesdays both face to face (F2F) and telephone and admin on Wednesdays. Joseph will be dealing with the following: Medication reconciliation i.e. making sure that your discharge medication or outpatient medication changes are reconciled with your repeat prescription list on our GP system. Complicated prescription queries for example patients on multiple medications, F2F & Telephone Consultations for minor health conditions like flu. Care homes medication queries. Medication reviews. New patient for their first medication issue.

Dr Babalola our GP trainee has now finished his training and will be leaving us to take up a substantive GP post in London. We wish him good luck.

Lisa Sotheron our health care assistant and phlebotomist is now a qualified nurse. She will be working as a practice nurse and will not be doing routine phlebotomy clinics.

We have recruited a new GP assistant Joshua Scoote, who has replaced Sam Taylor.

We now have extended access GP clinics at our sister surgery Riverside Health Centre in Manningtree. This will be on the third Saturday of every month dependent on staffing.

## Information for all our patients

Please book in yourselves and your children to have the flu vaccinations if you have not already done so. There is a high prevalence of viral respiratory illness this winter as we are all mingling without face masks.

The bank holiday hours for Ardleigh surgery are as follows:

We are open at 8.00hrs and close at 18.30hrs every weekday over the holidays except for the 25th, 26th December 2023 and the 1st January 2024.

As the dispensary and pharmacists will be busier than usual, please request your medications early but no more than a week earlier than usual.

The next compulsory Northeast Essex Surgery training afternoon will be on Tuesday the 30th of January 2023. The Surgery will close from 12.30hrs and dispensary from 12.00hrs.

Future dates are:

Tuesday 30th January 2024  
Thursday 22nd February 2024  
Wednesday 27th March 2024

Happy Christmas and all the best wishes for the new year.

The Ardleigh surgery team.

*Dr Cole*



### Mr John Wood December 1934 – October 2023. A tribute.

John Wood who passed away recently in Colchester Hospital after a short illness was a resident in Dunton's Almshouses in Dedham for over 16 years.

In his teenage years, John followed in his father's footsteps and was enlisted into the army initially as a cadet, to the Manchester Regiment. During his years in the army John rose to the rank of staff sergeant but more significantly became an accomplished musician as a bandsman trumpeter.

His role involved him in a great deal of travel both at home and abroad and in the early years after the second world war John was posted to Germany where he played in the military band as well as giving solo performances – the most memorable one for John was the sounding of the last post at a ceremony in the 1950's to commemorate the end of the Nuremberg Trials.

He maintained links with people he met during his time in Germany and he came to possess a German Military Iron Cross which was given to him in recognition of his ceremonial contributions - whether this was a formal award or a gift from a member of the German Military Police at the time is unclear but John was very proud to have been given this.

John lived very happily in the almshouses remaining totally independent up until the last year of his life and throughout maintained his love of music despite increasing deafness as he became older. He will be missed by his relatives in Newcastle, his friends and neighbours.

*Colin Biggins*

---

## stour valley U3A

## learn, laugh, live

Make the most of life once you're no longer in full time work and come and explore new ideas, interests and skills with University of the Third Age. Across the country U3A members are meeting new people, learning, staying active, and having fun later in life. It's local, social, friendly, low cost and open to all. We have over 40 interest groups including walking – from strollers to 5+ milers – theatre trips, garden visits, art appreciation, curry club, science group, languages, keep fit, pickleball, overseas travel ..... there's something for everyone. It costs only £15 a year.

Monthly coffee mornings are held on the first Friday of the month 10am – 12pm at the Lambe School, East Bergholt. Come along, meet some members, hear more about us and decide whether you'd like to join.

Monthly lectures are held on the second Wednesday at 2pm in the Constable Hall, East Bergholt. Guests are welcome for a charge of £4.

There is no talk in December but we resume on 10<sup>th</sup> January with Edward Vipond "Life as a Suffolk Farmer – Am I a food producer or conservationist ?" and on 14<sup>th</sup> February we have Dr Tobias Capwell, curator of arms and armour at The Wallace Collection.

Please take a look at our website [www.u3asites.org.uk/stourvalley](http://www.u3asites.org.uk/stourvalley) for more information and contact details.



**Barbie (12) 2023 - Directed by Greta Gerwig**

Wednesday, December 13<sup>th</sup> 2023

7:30PM - 10:00PM

Eccentric and individualistic, Barbie is exiled from Barbieland because of her imperfections. When her home world is in peril, Barbie returns with the knowledge that what makes her different also makes her stronger. Starring Margot Robbie and Ryan Gosling



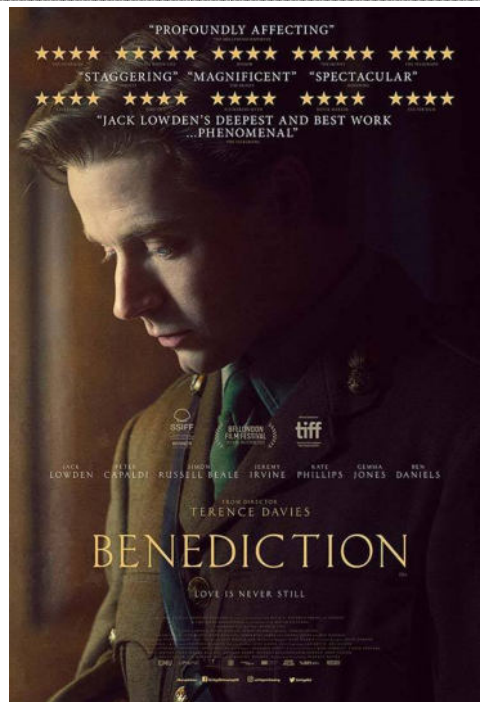
**Benediction (12A) 2022 - Directed by Terence Davies**

Wednesday, January 17<sup>th</sup> 2024

7:30PM - 10:00PM

A complex man who survived the horrors of fighting in the First World War, Siegfried Sassoon (Jack Lowden / Peter Capaldi), a soldier decorated for his bravery on the battlefield, became a vocal critic of the government's continuation of the war.

**Tickets £5 will be available online on our website, In-person at St Helena Hospice Shop, Dedham High Street or on the door.**





**Kingsleigh**  
Property Consultants

High Street, Dedham, CO7 6DE  
01206 940123

## WE'VE WON!

We've won an award for customer service at the BIGGEST awards in the UK property industry – The ESTAS.

Winners are selected purely on verified reviews from customers at the end of their moving experience.

So we'd like to say a BIG THANK YOU to everyone who reviewed us.



## Award-winning local, independent agent

- Fully immersive 360° tours
- Bespoke particulars
- Floorplans
- Social media adverts
- Professional photos
- Premium Rightmove listings
- Experienced, award-winning team
- Associate office in Park Lane, London



**SALES & LETTINGS**



sales@kingsleighresidential.co.uk  
lettings@kingsleighresidential.co.uk  
www.kingsleighresidential.co.uk

# BAILAND

CONSTRUCTION LIMITED

EXQUISITE ATTENTION TO DETAIL

TOAD HALL  
THE HEATH, DEDHAM  
ESSEX, CO7 6BT  
01206 323230

WWW.BAILANDCONSTRUCTIONLIMITED.CO.UK  
ENQUIRIES@BAILANDLTD.CO.UK



## Bland Landscapes Ltd

01206 230882

[www.blandlandscapes.co.uk](http://www.blandlandscapes.co.uk)  
[blandlandscapes@outlook.com](mailto:blandlandscapes@outlook.com)



Our services include:

- \* Treework Specialists
- \* Felling
- \* Pruning
- \* Reducing
- \* Reshaping
- \* Stump Grinding
- \* Seasoned Logs
- \* Fencing
- \* Green Waste recycling
- \* Driveways
- \* Patios
- \* Turfing
- \* Planting
- \* Commercial Grass Cutting

If your interested in Tree Surgery or Landscaping job opportunities,  
please contact us for recruitment possibilities.



RIBA Chartered Architect  
Mark Fage

Tel: 07976 655387 LONDON ESSEX SUFFOLK [www.markfage.com](http://www.markfage.com)



clinic1  
facial aesthetics

by Julia Foster

MSc, RM, SCPHN, Aesthetic Nurse

- Anti-wrinkle injections
- Dermal Fillers
- Body Contouring
- Aqualyx fat dissolving
- Teeth grinding - Facial Slimming
- Nefertiti Neck lift - Necklace lines
- Tear Trough correction
- Nonsurgical rhinoplasty
- Facial contouring packages
- Gift vouchers available

**20% OFF**  
Quote code  
**Dedham**

T&Cs apply

07973 345053 

[www.clinic1.co.uk](http://www.clinic1.co.uk) 

cliniconeessex 

[juliacfoster@yahoo.co.uk](mailto:juliacfoster@yahoo.co.uk) 

Clinic One, Clarkes farm, Harts Lane, Ardleigh, CO7 7QH 

Dedham Parish Magazine thanks the Advertisers for their support

# Right at Home Colchester & District

Quality Care & Support, from hourly visits to Live-In care.



## Our services include:

- Companionship
- Transportation and errands
- Meal preparation
- Light housekeeping
- Help with washing
- Personal care
- Medication support
- Post-operative support
- Live-In care
- Specialist Dementia care
- Hospital to home

and much more...

**01206 932792**

## Contact us today on:

-  01206 932792
-  [colchester@rightathomeuk.com](mailto:colchester@rightathomeuk.com)
-  [www.rightathomeuk.co.uk/colchester](http://www.rightathomeuk.co.uk/colchester)
-  [www.facebook.com/rightathomecolchesteranddistrict/](https://www.facebook.com/rightathomecolchesteranddistrict/)



Dedham Parish Magazine thanks the Advertisers for their support

WWW.SKYLARKSOCIAL.CO.UK



INFO@SKYLARKSOCIAL.CO.UK



# SKYLARK.

SKYLARK.

FARM SHOP. TERRACE.  
VINEYARD TOURS.  
EVENTS & PRIVATE HIRE.

SERVING LOCAL BEER, WINE, SPIRITS & SOFT DRINKS.  
TEA, COFFEE, CAKE & A WIDE RANGE OF SUSTAINABLE PRODUCE.

PRETTYFIELDS VINEYARD, DEAD LANE, ARDLEIGH, CO7 7PF



WWW.SKYLARKSOCIAL.CO.UK



@SKYLARKSOCIAL



/SKYLARKSOCIALLTD



INFO@SKYLARKSOCIAL.CO.UK



01206 231 593



VISIT OUR WEBSITE FOR EVENTS  
SCHEDULE AND BOOKINGS

PRETTYFIELDS VINEYARD, DEAD LANE,  
ARDLEIGH, ESSEX, CO7 7PQ

KEEP UP TO DATE ON OUR SOCIAL MEDIA



SKYLARKSOCIAL



Distillery tour and tastings every Saturday - book online.

Shop open Fridays and Saturdays 10am - 3pm, stocking produce from great local suppliers.

Landermere, Thorpe-le-Soken, CO16 0NH | 01255 258833  
www.eastcoastdistillery.co.uk | hello@eastcoastdistillery.co.uk



# Richardson .....&..... Rothwell

Unit 1, Dedham Vale Business Centre  
Manningtree Road  
Dedham  
Colchester  
CO7 6BL

Tel: 01206 323 732

Email: [enquiries@richardsonandrothwell.co.uk](mailto:enquiries@richardsonandrothwell.co.uk)

## MAKE US YOUR FIRST CALL FOR ALL OF YOUR PLUMBING AND HEATING REQUIRMENTS

We are your local reliable plumbing company. We undertake all plumbing works from heating servicing, heating system installs, bathroom suites, air source & ground source pumps as well many other plumbing requirements. Please contact us and we will be happy to offer a free quotation and any information that you may require.

Telephone 01206 323 732 or email [enquiries@richardsonandrothwell.co.uk](mailto:enquiries@richardsonandrothwell.co.uk)



# ELEANOR'S

PAINTING & DECORATING SERVICES



## INTERIOR AND EXTERIOR

CONTACT US TODAY FOR A FREE NO OBLIGATION QUOTE

All Female Team | City and Guilds Qualified



07414768950 | [eleanorspaintinganddecorating@gmail.com](mailto:eleanorspaintinganddecorating@gmail.com)



Dedham Parish Magazine thanks the Advertisers for their support



HUNNABALL  
Family Funeral Services



Here *whenever* you need us

Funerals | Memorials | Pre-paid Funeral Plans

Hunnaball of Colchester  
York House, 41Mersea Road,  
Colchester CO2 7QT  
**01206 760049**

Geo. Paskell of Manningtree  
19aHigh Street,  
Manningtree, CO111AG  
**01206 396709**

[www.hunnaball.co.uk](http://www.hunnaball.co.uk)

Your local solution for  
fully fitted blinds and  
plantation shutters.

With over 20 years of  
experience in the trade.

A wide range of  
shutter styles  
available to suit  
your needs, expertly  
installed to the  
highest standard.



Tendring  
Blinds & Shutters

★★★★★ rated excellent on [Google](#) [Cheskatrade](#)



MULTIPLE OPTIONS FOR  
Bi-Fold Doors



Call us today for your  
**FREE QUOTATION**

- Rollers
- Verticals
- Romans
- Perfect Fit
- Venetians
- Intu
- Day & Night
- Pleated
- Skylight
- Motorisation
- VS2 Slide
- Plantation Shutters



**01255 474241**  
[www.tendringblinds.co.uk](http://www.tendringblinds.co.uk)



Dedham Parish Magazine thanks the Advertisers for their support



Osteopathy and Western Medical Acupuncture Clinic in the heart of Dedham providing treatment for:

- Back pain & sciatica
- Arthritis pain & stiffness
- Neck & shoulder pain
- Trapped nerves
- Tennis/Golfer's elbow
- Tendinopathy
- All joint strains
- Muscle/ligament strains



*Dedicated to getting you better.*



**DEDHAM  
OSTEOPATHY**

**Luke Jackman Bsc Hons Ost  
Registered Osteopath**

Tel: 01206 323 239 / 07974 144593  
[www.dedhamosteopathy.co.uk](http://www.dedhamosteopathy.co.uk)

One hour initial appointment • Free on-site parking • Open weekdays and evenings

**Joined up  
Legal  
Services**

**for you**

**and your  
family**

When it comes to your legal needs, one benefit of working with FJG is that we offer a full range of legal services. We can help with Conveyancing, Equity Release, Family Law, Planning, Personal Injury and Wills, Life Planning & Probate providing joined up thinking that keeps all of your legal affairs with one trusted firm.

**Contact us today to make an appointment. Legal advice with a conscience.**

**FJG**

**FISHER  
JONES  
GREENWOOD  
SOLICITORS**

Fisher Jones Greenwood LLP, Charter Court,  
Newcomen Way, Colchester Business Park,  
Colchester, Essex, CO4 9YA  
Offices across Essex, Suffolk and London

**01206 700585**  
[www.fjg.co.uk](http://www.fjg.co.uk)  
[info@fjg.co.uk](mailto:info@fjg.co.uk)

**HORIZON  
LANDSCAPES  
EAST ANGLIA LTD**

**Design, Construction, Restoration, Maintenance**

Email: [info@horizonlandscapesea.co.uk](mailto:info@horizonlandscapesea.co.uk) Tel: 01206 322646

[www.horizonlandscapesea.co.uk](http://www.horizonlandscapesea.co.uk)

Dedham Parish Magazine thanks the Advertisers for their support





**BOND**  
**PLUMBING & HEATING SERVICES**

Oil - Gas - LPG

-  Domestic plumbing & heating services
-  Boiler installations, servicing & repair
-  Unvented hot water cylinders
-  Landlord gas safety certificates

Based in Langham  
 Tel 07590372433  
 Email [nick@bondphs.com](mailto:nick@bondphs.com)  
 Web [www.bondphs.com](http://www.bondphs.com)

Your local  
**tree specialist**



SPECIALIST TREE SURGERY • ARBORICULTURAL CONSULTANCY

**07841 623027**  
**[www.jftreespecialist.com](http://www.jftreespecialist.com)**

 FULLY INSURED AND COUNCIL APPROVED  
 FREE ESTIMATES AND EXPERT ADVICE

01206 231720 • [INFO@JFTREESPECIALIST.COM](mailto:INFO@JFTREESPECIALIST.COM)

**What we do**

- ✓ Tree Surveys
- ✓ Planting and Aftercare
- ✓ Fruit Tree Pruning
- ✓ Felling and Dismantling
- ✓ Tree Monitoring
- ✓ Hedge Cutting
- ✓ Stump Removal
- ✓ Fencing
- ✓ Landscaping
- ✓ Logs and wood chip supplied
- ✓ Mobile sawmill service
- ✓ Mowing contracts
- ✓ Crown Reduction, Lifting, Thinning and Cleaning



**Rehab at Home**

Our team of Chartered Physiotherapists and Rehabilitation Assistants will be with you every step of the way, by creating and regularly assisting with your personalised exercise plans to help you become stronger, fitter, more mobile and independent in the comfort of your own home.




  
**ann mason**  
 CARE

**Ann Mason Care**  
 Holton Business Park, Holton St. Mary, Colchester, CO7 6NN.  
 Telephone: **01206 233372** Visit: [www.annmasoncare.co.uk](http://www.annmasoncare.co.uk)

Dedham Parish Magazine thanks the Advertisers for their support



**Also at Pedicare:**  
**Felicity Watts**  
**Reflexology**  
 in need of relaxation?



**Tel: 01206 322674**  
**Mob: 07732 039726**

Email: [nicola.pedicare@gmail.com](mailto:nicola.pedicare@gmail.com)  
 Web: [www.pedicarefootclinic.co.uk](http://www.pedicarefootclinic.co.uk)

Please contact Felicity for an informal chat about the benefits of Reflexology and how it can help you.

**T: 07432 098079**  
**E: [fjwattsreflexology@gmail.com](mailto:fjwattsreflexology@gmail.com)**

Dedicated to the care of your feet

Relax • Restore • Revive

London House, High Street, Dedham, Colchester CO7 6HA

**JP WILSON PLUMBING AND HEATING**

Gas Engineer  
 Bathroom Installation  
 Boiler Installation  
 Faults & Servicing  
 Landlord Safety Certificates  
 Unvented Systems  
 Fully Insured

**TEL:** 01206 322141  
**MOBILE:** 07445 270703  
**EMAIL:** [jon@jpwplumbing.co.uk](mailto:jon@jpwplumbing.co.uk)  
[www.jpwilsonplumbingandheating.co.uk](http://www.jpwilsonplumbingandheating.co.uk)

East Lane  
 Dedham  
 Essex CO7 6BE



**HeatingOilToday.co.uk**

**Tel : 01473 396260**

**Home Heating Oil**

**Same Day Delivery**

**Baby Tankers**

**Minimum 200 Litres**

**7 Days a Week**

**7am - 7pm**

Dedham Parish Magazine thanks the Advertisers for their support

## PHILIP STRANGWARD – ACCOUNTANT

(Dedham based)

Full service at competitive rates, including:

- \* Limited companies
- \* Bookkeeping
- \* Corporation tax
- \* Self assessment
- \* Vat returns
- \* R&D tax claims
- \* Making tax digital
- \* IR35 compliance
- \* COVID-19 support
- \* Company formations
- \* Business plans
- \* Payroll

Call Philip Strangward on  
**01206 643000 or 07880 550000**  
[pstrangward@gmail.com](mailto:pstrangward@gmail.com)  
for free initial consultation  
[www.philipstrangward.co.uk](http://www.philipstrangward.co.uk)



## HALL FOR HIRE



Dedham Sports Pavilion is available for hire. Ideal for private parties, community groups and small business events. Can accommodate up to 60 people. Modern kitchen and bar on request. Beautiful location overlooking playing fields, small car park, outside veranda, ramped access. Preferential rates for community groups. Please call us to discuss your requirements. Andrew Bell 07753 838375, Nicola Baker 07860 173214

**ADVERTISE** in this magazine for as little as £105 per annum (Eighth page, B/W). The advertisement will be included in TEN issues: Jul/Aug & Dec/Jan are combined. There is no VAT to be added. Advertisement location is subject to availability at the time. We do not accept cash payment, only bank transfers or cheques.

### Please contact

[dedham.advertising@gmail.com](mailto:dedham.advertising@gmail.com) for more information and details of rates for other sizes of adverts.

## P.J. SAMPSON BUILDERS

**COMPLETE BUILDING SERVICE**  
**30 Years' Experience**

**Tel: 01206 230619**  
66 Tile Barn Lane Lawford

**Brick work Specialist**  
**Painting & Decorating**  
**Plastering and Carpentry**  
**Plumbing & Electrics**  
**Roofing**

**All Property Maintenance**

## THE SUN INN



A REFUGE THAT'S EASY TO FIND BUT HARD TO LEAVE,  
WHERE TIME SLOWS DOWN IN THIS RUSTIC RETREAT.

The Sun Inn, High Street, Dedham, Essex CO7 6DF  
Telephone: 01206 323351  
[www.thesuninndedham.com](http://www.thesuninndedham.com)



# MN

Explore the Nordic  
countries &  
Scandinavia with  
the experts  
offering year  
round tailor made  
holidays.

Start planning  
your adventure!

Tel: 0207 550 9251

Email: [holidays@  
magneticnorthtravel.com](mailto:holidays@magneticnorthtravel.com)

[www.magneticnorthtravel.com](http://www.magneticnorthtravel.com)



**Explore the whole Stour**  
 SUDBURY - BURES - HAYLAND - DEDHAM - CATTAWADE

Paddle'n'Pub - Paddle'n'Picnic - Canoe Safaris - Adventure Paddles

**STOURVALLEY**  
**ADVENTURECENTRE.COM**  
 BIKES | WATERCRAFT | CAMPING

**Foot Health by Lorrayne**  
 foothealthbylorrayne.co.uk

**Registered Foot Health Practitioner**  
 Offering convenient appointments in your own home  
 Trained to assess & treat recognised foot problems

*Qualified and Insured Foot Health Practitioner*  
**Mobile Service**

- Toenail cutting/trimming
- Corns
- Callus reduction
- Verruca
- Thickened Nail reduction
- Athletes Foot
- Fungal Nail Infection
- Ingrowing Toe Nails
- Diabetic Foot Care

**To book your appointment:**  
 M: 07531 692372  
 T: 01206 323 051  
 E: lorrayne.foothealth@gmail.com

Find us on

**Gary Moye**  
**Plastering**

Over 25 years' local experience  
 Now based in Stratford St Mary

Tel: 07807 314911  
 email: garystewartmoye@gmail.com

**DUCHY BARN**  
**COMMUNITY CENTRE**

The Duchy Barn Community Centre holds its community coffee mornings on Tuesdays and Thursdays of each week from 10.30 am - 12 noon. The Barn is available to hire at very reasonable rates for small functions/celebrations/group meetings etc.

To make a booking or for further details contact Anne Rowledge on 01206 322394

Dedham Parish Magazine thanks the Advertisers for their support

Home Care Visits



ann mason  
CARE



Passive Care Monitoring



Video Care Visits

Ann Mason Care Holton Business Park, Holton St. Mary, Colchester, CO7 6NN.  
Telephone: 01206 233372 Visit: [www.annmasoncare.co.uk](http://www.annmasoncare.co.uk)



ACT, REDUCE, SAVE.

Knowing what was to come, would you have done everything in your power to prevent COVID-19?  
**OF COURSE YOU WOULD HAVE!**

The volume of CO2 produced each day from the entire population is putting the planet in danger. To avoid a climate pandemic, that will have *critical consequences* on our future, we need to **ACT** now.

To **REDUCE** our carbon footprint, let's start with improving our homes. HIGAIN Termo Clima is an established UK company that has been installing renewable technology solutions since 1988.

We can offer a result-based planning consultancy service ranging from application to design to structure; and will thereby reduce the CO2 produced by your home, improve your energy efficiency and **SAVE** you money - as well as the planet.

WE ARE APPROVED INSTALLERS OF:



SOLAR PANELS



HOME BATTERIES



SOLAR THERMAL



HEAT PUMPS



SWITCH TO GREEN ENERGY



ENQUIRE NOW! Tel: 074 15 118 497 / Mob: 01206 322037 E: [sales@higaintc.com](mailto:sales@higaintc.com)





## Leisure Hire



### Marquee and Equipment Hire

- Marquees erected on most surfaces •
- Awnings • Walkways •
- Extensions to Buildings • Linings •
- Lighting • Furniture •
- Flooring & Staging • Heating •

Summer or Winter  
Weddings Anniversaries Corporate

*Brochure upon request*

**(01206) 242 196**

[leisurehire@gmail.com](mailto:leisurehire@gmail.com)

2yrs +

## LANGHAM PRE-SCHOOL

VILLAGE LOCATION JUST 5 MINUTE DRIVE FROM:  
ARDLEIGH, HIGHWOODS, MYLAND,  
BOXTED, DEDHAM & GREAT HORKESLEY

Up to 30 free funded hours available  
We accept 2 year funding

For more info call:  
07930 963638

Come and explore...

Langham Community Centre  
School Road  
Langham  
CO4 5PA



Charity Commission no. 1135120

[www.langhampreschool.co.uk](http://www.langhampreschool.co.uk)

## S. J. Smith

### Plumbing and Heating Engineers

**From an extra radiator  
To a full heating system**



- \* Boiler changes
- \* Bathroom suites
- \* *Aqualisa, New Team*  
& other showers
- \* Electric showers
- \* All heating and  
plumbing repairs



FREE ESTIMATES  
CORGI REGISTERED

22 Bullock Wood Close

COLCHESTER  
843 493



## BENTLEY FIRE SHOP

[www.bentleyfireshop.co.uk](http://www.bentleyfireshop.co.uk)

- ECO FRIENDLY WOOD BURNING STOVES
- MANTLE & FIREPLACE INSTALLATIONS
- MEDIA WALLS & ELECTRIC FIRES
- SERVICING & CHIMNEY SWEEPS
- GAS BOILER & FIRE SERVICING
- KILN DRIED OAK SUPPLY & DELIVERY

**Come and visit our showroom to  
discuss your requirements and arrange  
a free, no obligation survey**

Bentley Fire Shop, Plough Road,  
Great Bentley, Colchester, CO7 8LG

 **01206 251118**  
[sales@bfsheating.co.uk](mailto:sales@bfsheating.co.uk)  
[@bentleyfireshop](https://www.bentleyfireshop.co.uk)

## Manningtree Body Repair Centre

Riverside Avenue West  
Lawford  
Manningtree  
Essex  
CO11 1UN

Tel / Fax: (01206) 393 191

All Vehicle Body Repairs & Refinishing  
work undertaken including:

- Insurance Work, MOT welding,  
Panel Beating and Spraying
- Assistance given to "Non-Fault"  
Third Party Insured
- Collections and Delivery

## Friendly, Professional Chauffeur



- ✓ Chauffeur driven Mercedes  
Benz E Class
- ✓ Serving Essex and Suffolk
- ✓ Fully licenced, trained and insured
- ✓ Courteous, professional and friendly
- ✓ Based in Ardleigh, Colchester

Call us today for a **free quote**

**07889 924 307**

[valleyexecutivetravel.co.uk](http://valleyexecutivetravel.co.uk)

[info@valleyexecutivetravel.co.uk](mailto:info@valleyexecutivetravel.co.uk)

Mobile

## fresh fish shop



Dedham High street

THURSDAY 2pm - 2.30pm

Straight from Lowestoft fish market!  
A wide selection of fresh fish, smoked  
fish and seasonal shell fish.

**Every Thursday**  
**2pm- 2.30pm**

by the Dedham memorial

Deliveries also available in the  
Dedham area on Thursdays.

Mob: 07967755771 Tel: 01206 303104

## Daniel Williams ELECTRICIAN



- Rewires & Additional Points
- Fuse Board Replacement
- New Builds, Kitchens & Bathrooms
- Electrical Testing / Fault Finding

**07818 487419**  
Mobile

**01255 861791**  
Office

[daniel.williams35@btinternet.com](mailto:daniel.williams35@btinternet.com)

Open to All regardless of catchment area

From age 2 years...



\*\*\* Offering large indoor and outdoor learning spaces \*\*\*



[www.ardleighpreschool.co.uk](http://www.ardleighpreschool.co.uk)  
Tel: 07517 430114

Ardleigh Village Hall, Station Road, Ardleigh, Essex, CO7 7RS



**Dave's Private Hire**  
Professional and friendly service

**Based in Dedham**  
For all your travel needs:

- Visits to local shops
- Days out
- Airports
- Cruise terminals

Licensed to carry up to 4 passengers

To make a booking please call  
**07834 570479**

[davesprivatehire44@gmail.com](mailto:davesprivatehire44@gmail.com)

# Tree Surgeon



*Providing excellence in:*

- Tree Felling
- Canopy Reduction
- Hedge Cutting
- Garden Clearance
- Tree Shaping and Pruning
- Stump Grinding
- Pollarding
- Emergency Tree Work

*Free Consultation for Small and Large Jobs*

*Public Liability Insurance*

M: 07515288736 O: 01787 228341  
[info@blaketreecare.co.uk](mailto:info@blaketreecare.co.uk) [www.blaketreecare.co.uk](http://www.blaketreecare.co.uk)

*"A very competitive price and a VERY tidy job" ★★★★★*

The workplace of tomorrow will be driven by the worlds of science, technology, engineering, arts, and mathematics. That is why we have put STEAM at the heart of our curriculum.

## DISCOVER THE POWER OF STEAM...

**OPEN MORNING**  
FRIDAY SEPTEMBER 29  
Prep School Open Morning  
SATURDAY SEPTEMBER 30  
Senior School Open Morning  
[www.colchesterhighschool.co.uk](http://www.colchesterhighschool.co.uk)

**WE ARE EXCELLENT.**  
OF INSPECTION 2023

STEAM POWERED. FUTURE READY.

**COLCHESTER**  
PREP AND HIGH SCHOOL

Please mention Dedham Parish Magazine when you contact any of these Advertisers



Call for a free quotation

Office: **01255 886422**

Mobile: **07939 554197**

Website: [www.spenceelec.co.uk](http://www.spenceelec.co.uk)

**24 Hour Emergency Call Out**

## All Electrical Work Undertaken **Domestic & Commercial**

ECA / NAPIT Approved Electrical Contractor

Fully Insured. New Installation.

Rewires and Upgrades. Solar PV & Battery storage

Additional Sockets and Lighting. EV Chargers

Garden / Garage Power and Lighting.

Full Electrical Testing and Inspection Service.

Domestic Electrical Fault Finding and Repair.

**Prompt Reliable Service**

## HUNTERS BROOK

The Kitchen & Bedroom  
Specialists

All aspects of building work eg: extensions, removal of walls  
etc, plastering, tiling, electrical & plumbing undertaken as we project  
manage your kitchen from start to finish.

07901-557046 (Terry)

[sales@huntersbrook.co.uk](mailto:sales@huntersbrook.co.uk)

"Designers & fitters covering Herts & Essex"



Find us on Facebook



**HUNTERS BROOK**  
The Kitchen & Bedroom Specialist

Hunters Brook Kitchens Ltd, Unit 2B,  
St James Centre, East Road,  
Templefields, Harlow, Essex, CM20 2SX

**HUNTERS BROOK**  
The Kitchen & Bedroom Specialist



## Richard Kimberley Services Lawn Mower Service and Repair Centre

Rotary pedestrian, ride-on mowers, rotavators.

Shear sharpening service. Welding expert.

Proven workmanship. Engineering workshop established  
over 30 years.

Competitive, fast service, collection and delivery by arrangement.

Telephone: 01206 230964

Email: [rks@richardkimberleyservices.co.uk](mailto:rks@richardkimberleyservices.co.uk)

88 Hungerdown Lane, Lawford, Manningtree, CO11 2LY




**LOCAL ELECTRICIAN**  
NAPIT approved, fully insured.

All works carried out, including testing and fault finding.

Contact Daz for free quotations, no job too big or small.

07852 319456 d.electrics@yahoo.com

**A.Slocombe**  
**General Builder**  
Hard Landscaping,  
Roofing and Property Maintenance

Brickwork, Blockpaving Drives, Carpentry  
No job too small, for free friendly advice  
and estimates phone

**01206 322 884 / 07786 871 364**

**Andrew Ablett**  
**Servicing & Repairs**  
Foxash Workshop,  
Foxash, Lawford, CO11 2LR

**TEL: 07917 223274**

Servicing, Repairs, Diagnostics  
Cars - Vans - Motorcycles

**ARDLEIGH**  
**CHIMNEY SWEEP SERVICES**



- Traditional and Power Sweeping
- CCTV Inspections
- Safety Certificate Issued
- Fully Insured

**ANDREW SMITH**

**01206 231718 · 07845 249820**  
31 HARVICH ROAD, LAWFORD, MANNINGTREE, ESSEX CO11 2LS

**HOLIDAY COTTAGE**  
Long Road East  
**DEDHAM**  
Weeks, Weekends & Between Houses.

Tel. 01206 323 345 / 0797 9757 470

[www.holidaycottagededham.co.uk](http://www.holidaycottagededham.co.uk)  
E Mail owlbarn@live.com

**LITTLEBUILD BRICKWORK**  
N.V.Q / City & Guild Qualified

All aspects undertaken:  
New Builds, Extensions, Garden Walls  
Repair, Block Paving, Slab Work

**Call for a free quote today**  
**Tel: 07881 095818**  
**Email: liddleiain@gmail.com**

**Nigel Bruce**  
Industrial & Domestic  
**ELECTRICIAN**  
'The Swift', Upper Street,  
Stratford St Mary,  
Colchester CO7 6JW

**Tel: (01206) 322 751**

**LAWN CUTTING SERVICE**  
Reasonable prices & reliable service  
Small/medium sized lawns.

Call Joe - 07986466403

Email - Joemattthewpreston@icloud.com



Join us for tennis at...

## Dedham LTC

Community club set in the heart of Dedham

Friendly club sessions offering tennis for all

Junior & adult coaching sessions available

Fantastic membership options all year round

The Drift, Dedham, Colchester,  
Essex, CO7 6AH.  
[www.clubgack.lta.org.uk/dedhamlts](http://www.clubgack.lta.org.uk/dedhamlts)  
email: [dedham-tennis-committee@protonmail.com](mailto:dedham-tennis-committee@protonmail.com)

## Wendy's Curtains

Professionally made to measure curtains, roman blinds and soft furnishings, with a wide range of fabric samples.

☎ 01206 395996  
☎ 07966 718 414  
✉ [info@wendyscurtains.com](mailto:info@wendyscurtains.com)  
🌐 [www.wendyscurtains.com](http://www.wendyscurtains.com)



## Essex & Suffolk PEST SOLUTIONS

*Your local pest control  
experts for home & business*

- Free advice, fast response
- Highly accredited (NPTA)
- Fully qualified & insured
- Discreet — unmarked vehicles

**Tel: 01473 328092 (Holbrook)**

Email: [info@eandspestsolutions.co.uk](mailto:info@eandspestsolutions.co.uk)



**Make your home perfect**

Bespoke, handmade soft  
furnishings & upholstery

Contact Annabel  
07539 722496 [@sewnimble](https://www.instagram.com/sewnimble)

## The Cutting Cave



- Barbers & ladies .
- Hair extensions (Remi Cachet )
- Children welcome.

Ring for appts or Just Walk in....

☎ 07751517383



For all your Lock requirements, please call  
your local Locksmith, based in Brantham

**07887 686839**

Email: [trevor@towneslocksmiths.co.uk](mailto:trevor@towneslocksmiths.co.uk)



**Hewes has been keeping  
Businesses and Families Safe  
and Secure since 1961**

We protect both Commercial and Domestic properties and are a National Security Inspectorate (NSI) Gold installer and can install new systems or upgrade existing equipment.

- CCTV Supply & Installation
- Intruder & Fire Alarms
- Access Control & Gate Automation
- 24 hour Monitoring & Police Response

## Concerned about SECURITY?

Would you like a FREE  
Security Review?



**01206 807218**

**HewesGroup.com**



**340 The Crescent, Colchester Business Park, Colchester CO4 9AD**

### **DEDHAM PARISH CHURCH - Guided Church and Tower Tours.**




**Book a guided church tour, tower tour or both with our experienced tour guides.**

Please email in advance to [stmaryda@gmail.com](mailto:stmaryda@gmail.com) or call the Parishes Office on 01206 322136. The cost is £5 per person. Family ticket available from £10 for up to 5 people. For Tower Tours, children between the ages of 8 and 16 must be accompanied by an adult. Unfortunately we cannot accept any children under the age of 8.

## **DEDHAM VALE TREE SURGERY**

- NPTC qualified, fully insured
- Hedge maintenance and reduction
- Stump grinding
- Chestnut cleft fencing installed
- All tree work undertaken
- Crown reduction and shaping
- Pruning and pollarding
- Felling, sectional dismantling

**SPECIALISING IN BIG TREES IN DELICATE SITUATIONS**

**[www.dedhamvaletreesurgery.co.uk](http://www.dedhamvaletreesurgery.co.uk) 07756811098** 

*Dedham Parish Magazine thanks the Advertisers for their support*



**MILSOM**  
HOTELS & RESTAURANTS

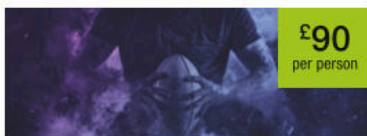
**TALBOOTH MARQUEE**  
01206 322795  
**THE HANGAR**  
01473 333741

[milsomhotels.com/event](http://milsomhotels.com/event)



**£75**  
per person

**TALBOOTH MARQUEE BBQS**  
TALBOOTH MARQUEE - 4TH & 11TH AUG



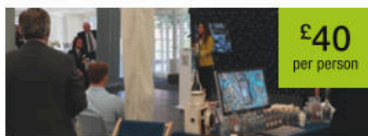
**£90**  
per person

**FEAST OF RUGBY**  
THE HANGAR - 9TH SEPT TO 28TH OCT



**£40**  
per person

**IBIZA PARTY NIGHTS**  
THE HANGAR - 25TH AUG



**£40**  
per person

**MILSOM BUSINESS SHOWCASE**  
TALBOOTH MARQUEE - 5TH OCT



*fidelity* *fides*  
*fiduciary fiducia*

## How can you create a secure financial future for your family?

**A conversation with one of our financial advisers could give you the clarity and planning you need for the future.**

Fiducia Wealth Management, Dedham Hall Business Centre,  
Brook Street, Dedham, Colchester CO7 6AD.

Telephone: **01206 321045** E-mail: [email@fiduciawealth.co.uk](mailto:email@fiduciawealth.co.uk) Visit: [fiduciawealth.co.uk](http://fiduciawealth.co.uk)

Authorised and regulated by the Financial Conduct Authority. FCA No. 408210

## Munnings

ART MUSEUM  
DEDHAM - ESSEX

5 April - 22 October 2023  
**Munnings: Colour & Light**

**Museum & Shop** open 1.30-4.30pm,  
Weds-Sun & Bank Hol Mondays

**Cafe** open 10am-4.30pm,  
Weds-Sun & Bank Hol Mondays

See [www.munningsmuseum.org.uk](http://www.munningsmuseum.org.uk) for  
events listings

Castle Hill, Dedham, 01206 322127  
reg charity no 1161304



Local residents free museum entry 7-9 July 2023

Dedham Parish Magazine thanks the Advertisers for their support